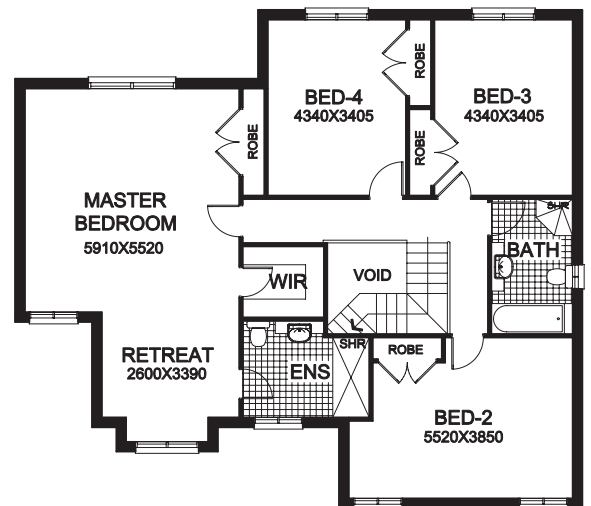
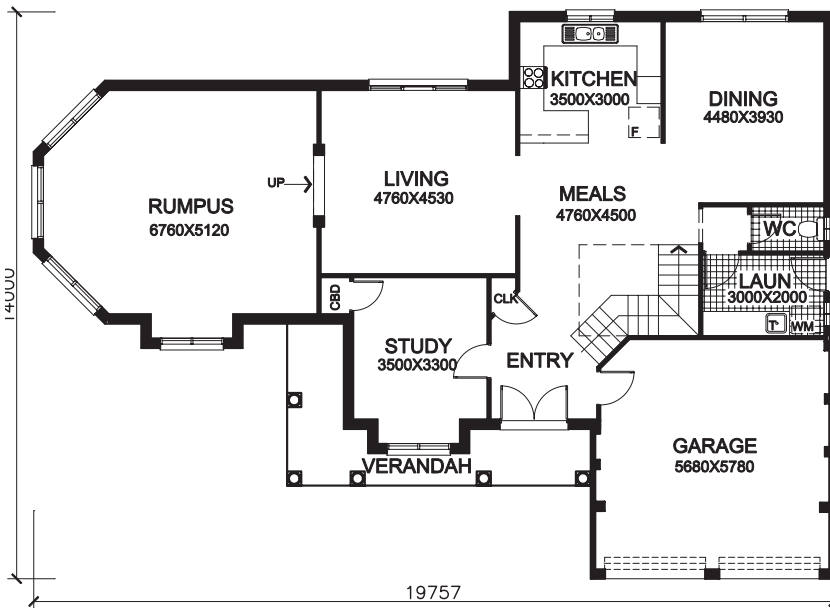




"The Kensington"



TOTAL SQUARE METRES 340.91 sqm (TOTAL SQUARES 36.7 sq)
Frontage required 22.4m

Michael Sincek
m 0413 761 791
BLN 216339C

9a Jamaica Park Road, Ellis Lane, NSW, 2570
ph/fax 02 4655 3929
email michael@kordovanhomes.com.au